

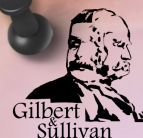


Lola Rosa

Healthy vegetarian restaurant

545 Milton, Montreal
H3X 1W5 Quebec Canada
Tel: (514) 287 9337

4581 Avenue du Parc,
Montreal, Quebec, Canada
Tel: (514) 843-5652



PRODUCTRICES / PRODUCERS: SHIVANI SETH & NARMADA GUNAWARDANA
METTEUR EN SCÈNE / STAGE DIRECTOR: CAMERON MACLEOD
DIRECTEUR MUSICAL / MUSIC DIRECTOR: THOMAS BURTON
CHOREGRAPHE / CHOREOGRAPHER: RANA LIU
GERANTE DE SCÈNE / STAGE MANAGER: LEAH MESH-FERGUSON
DÉCORATEUR / SET DESIGN: JEAN-CLAUDE OLIVIER
ÉCLAIRAGISTE / LIGHTING DESIGN: ALEX LEYBOUE
COSTUMIER / COSTUME DESIGN: CELINA KRENN



HMVS PINAFORÉ

THE LASS THAT LOVED A SAILOR



PROGRAM AND POSTER BROUGHT TO YOU BY CAI CHENG

PRESIDENT'S NOTE

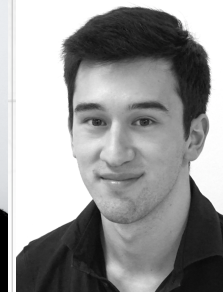
Since its premiere in 1878, *H.M.S Pinafore* has been a favourite production of Savoy enthusiasts and theatregoers alike. The McGill Savoy Society, in its 51st season, presents a new take on this popular tale of thwarted love. With an outstanding team including last year's director of *The Mikado*, Cameron MacLeod, we have brought together McGill students and Montreal community members from all backgrounds for a truly extraordinary collaborative effort.

Thank you, as always, for your generous donations without which our student run SSMU service, would not be possible. In addition to being a lot of fun to produce, "putting on a show" provides students with extensive technical training and invaluable theatre experience. Thanks to our fabulous cast and orchestra members and our creative and executive teams who have dedicated their evenings and weekends to presenting such a high-quality show. Every year the McGill Savoy Society proves that we are so much more than a theatre company-we are an ever-growing family - that nurtures our own, and our community.

Rachel Winer



Lindsay Peets



Zainen Suzuki



Dushan Tripp



Nicole Burke



Breanna Frape



Talia Fuchs



Grace Miller-Day



Hannah Moloshok



Allison O'Brien



Paige Palenski



Andrea Salas





Sam Strickland



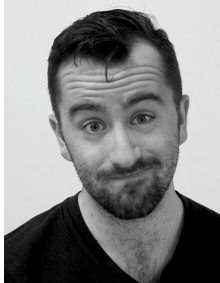
Anna Bond



Allegra Johnston



Jonah Spungin



Stephen Reimer



Erika Davis



Grace Wiebe



Victor Hsu



Sophia Metcalf



Shant Boodaghians



Saskia Rolland-Bezem



John Cook



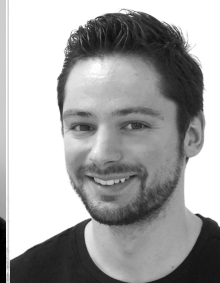
Steven Finley



Travis Holt



Adrian Nagy



Jean-Francois Raynaud

DIRECTOR'S NOTE

Branded as a political satire against the British class system, *Pinafore* opened to lack luster reviews when Gilbert and Sullivan premiered it in the 1870s. However it soon caught on, especially with American audiences when it travelled to New York. The rest as they say was history. *H.M.S Pinafore* or the *Lass that loved a Sailor* is one of what Gilbert and Sullivan fans call “the big three”. Alongside *The Mikado* and the *Pirates of Penzance*, this piece has the most recognition for its catchy tunes and wacky characters. Songs such as “A British Tar”, “When I was a Lad”, and “For He is an English Man” will make common casual appearances on *Star Trek the Next Generation*, *The Simpsons*, *Family Guy* and even obscure Disney channel series. This is most likely one of the main reasons for its historical success. However, that is not the only reason.

What makes the story particularly timeless is that its central theme of “star crossed lovers” is one that all audiences can relate to. In *Pinafore* we see that love transcends class, age and culture. In our particular version of *Pinafore*, we have taken this theme further by placing our ship in a parallel fictional early 20th century Britain. In this world, norms of gender roles and sexual orientations were non-existent.

I was in the audience 10 years ago when Savoy last performed this beloved operetta. I fell in love with it as well as with Gilbert and Sullivan. Some of the scenes tonight even pay tribute to that particular production. It started for me the off and on eight year journey I have had with Savoy and allowed me to have some of the best memories of my life. I hope that you fall in love tonight with this story and music as much as I did then.

Enjoy

Cameron MacLeod



MUSICAL DIRECTOR'S NOTE

"Love levels all ranks". This central theme of *HMS Pinafore* exemplifies Savoy as a community. Our members' passions for music and laughter have formed a tight rigging; powerful enough to bind us together despite our differences and imbued with a conviction strong enough to catch us if we fall. It has been absolutely extraordinary to watch this group transform from a ragtag bunch of strangers into a well-trained crew of fully committed performers. They've proven that once you get on stage, it doesn't matter where you come from or where you've been. The only thing that matters is that we have a chance to share our passion for this story with you, our audience.

As a fledgling conductor, these bonds that have formed so quickly have been invaluable. There's no room for self doubt when your heart is full of this much love. Our unbelievably talented cast and orchestra have held me up when I've been at my most vulnerable, and for that I am extremely grateful.

My goal is for you to feel even a fraction of the love I've felt over the past four months. That, combined with one of the most charming and lush musical scores in the Gilbert and Sullivan repertoire, should ensure that your voyage today will be most enjoyable. Enjoy the show!

Thomas Burton



SPECIAL THANKS

Special thanks to:

Corinne Deeley, Keith Roche, Catherine Bradley, all the staff and crew of Moyse Hall, Kathleen Bradley, Stefan Joel Fong, Student Society of McGill Undergraduates (SSMU), James Box, Susan Button, Doug Peets, Kavetia Dass, Timpano Percussion, Queer McGill, Arts Undergraduate Theatre Society (AUTS), Players Theatre, Montreal West Operatic Society (MWOS) and CopiEUS

A huge thanks to our patrons:

Tony & Margie Zekulin
Norman & Oli Simons
Greg Crawford & Jen McLellan
Emily Gray
Hudson-Moloshok Family
Jane Hargraft



THE MCGILL SAVOY OPERA ORCHESTRA

Concertmaster:

Katelyn Emery

Violins:

Ivan Chan, Katelyn Emery,
Alexia Hlynialuk, Sunny Shih

Violas:

Alexandra Andrews
Kevin Woo

Cello:

Katie Newman

Double-Bass:

Stephane Krimms

Flutes:

Carina Fan, Diana Farnand,
Lily Su, Rachael Cohen

Oboe:

Amanda Kitik

Clarinets:

Emily Gray
Sam Min
Clara Troje

Bassoon:

Aviner Hartwick

Horns:

Vaughan Cooke
Anna Pierson

Trumpets:

Kathleen Booth, Todd Holland,
Joon Park

Trombones:

Aaron Chan
William Broverman

Percussions/Timpani:

Heather Worling
Mickey Yang

Performances held on Feb 13, 14, and the 21st will be conducted by Thomas Burton. The performance on Feb 20th will be conducted by Daniel Arthur.

Diana, Carina, Claire and Todd will be playing Feb 13th, Feb 14th at 7:30pm, and Feb 21st at 2:00pm. Rachael, Lily, Sam and Kathleen will be performing on Feb 14th at 2:00pm, Feb 20th, and Feb 21st at 7:30pm.

ABOUT SAVOY

The McGill Savoy Society, a student group of the SSMU (Students' Society of McGill University) is a non-profit, high-profile student theater group, supported by a large and active patron base, the SSMU, and its audience. We are the cast, creative team, production team, stage crew, and orchestra of the year's productions, as well as an elected executive to provide direction and manage finances.

We are a social group, and our friendships are formed through the activity of producing one or two high-profile spectacular shows per year. The main stage production is traditionally a Gilbert & Sullivan operetta, held before the winter Reading Week. The sideshow is any of a variety of music-based shows; recitals, revues or even concert versions of musicals.

2014 - 2015 SAVOY SOCIETY EXECUTIVE TEAM

President

Rachel Winer

President Emeritus

Erika Chase Davis

Vice-President

Grace Miller-Day

Treasurer

Laura Johnston

Secretary

Anna Queen

Publicity Director

Vivian Ng

Publications Director

Cai Cheng

Members at large-cast

**Jonah Spungin
Lindsay Peets**

Member at large-orchestra

**Vaughan Cooke
Diana Mary-Elizabeth**



THE MCGILL SAVOY SOCIETY

PRESENTS

H.M.S. PINAFORE

— OR —

THE LASS THAT LOVED A SAILOR

Book and Lyrics by
Sir William Gilbert

Producers
Shivani Seth
Narmada Gunawardana

Musical Director
Thomas Burton

Chorus Master
Nicholas Burns

Set Designer
Jean-Claude Olivier

Costume Designer
Celina Krenn

Assistant Stage Director
Celia Taylor

Assistant Stage Managers
Elizabeth McLellan
Celia Taylor

Props Master
Celia Taylor

Make-up
Erika Davis

Music by
Sir Arthur Sullivan

Stage Director
Cameron MacLeod

Stage Manager
Leah Mesh-Ferguson

Choreographer
Rana Liu

Lighting Designer
Alex Levesque
Maia de Graaf

Production Manager
Marrissa Lewis

Assistant Musical Director
Daniel Arthur

Assistant Costume Designer
Erinn Farmer

Hair
Emma McQueen

Rehearsal Pianists
Natalia Tishina, David Mun,
Elena Motovilova, Chris Pacis

CAST

Ralph Rackstraw,..... Sam Strickland
Able Seaman

Josephine,..... Anna Bond
The Captain's Daughter

Captain Cororan,..... Jonah Spungin
Commander of the H.M.S. Pinafore

The Rt. Hon. Sir Joseph Porter, KCB,..... Stephen Reimer
First Lord of the Admiralty

Little Buttercup,..... Erika Davis
Grace Wiebe

Dick Deadeye,..... Victor Hsu
Able Seaman

Billie Bobstay,..... Sophia Metcalf
Boatswain's Mate

Bob Becket,..... Shant Boodaghians
Carpenter's Mate

Cousin Hebe,..... Saskia Rolland-Bezem
Sir Joseph's First Cousin

Sailors,..... John Cook
Steven Finley
Travis Holt
Adrian Nagy
Jean-Francois Raynaud

Sisters,..... Lindsay Peets
Zainen Suzuki
Dushan Tripp
Nicole Burke
Breanna Frappe
Talía Fuchs
Grace Miller-Day
Hannah Moloshok
Allison O'Brien
Paige Palenski
Andrea Salas

*Allegra and Grace will be
performing Feb 13th at 7:30pm,
Feb 14th at 2:00pm and Feb 21st at
7:30pm.

Anna and Erika will be performing
Feb 14th at 7:30pm. Feb 20th at 7:30
pm and Feb 21st at 2:00pm.

MUSICAL NUMBERS

Act I

1. "We Sail the Ocean Blue" _____ Sailor Chorus
2. "I'm Called Little Buttercup" _____ Buttercup
3. "The Nightingale/A Maiden Fair to See" _____ Ralph Rackstraw, Sailor Chorus
4. "My Gallant Crew" _____ Captain Corcoran, Sailor Chorus
"Sir you are sad" _____ Captain Corcoran, Buttercup
5. "Sorry her lot" _____ Josephine
6. "Over the Bright Blue Sea" _____ Sisters, Cousins and Aunts
7. "Sir Joseph's Barge is Seen" _____ Chorus
8. "Now give three cheers" _____ Captain Corcoran, Sir Joseph, Hebe, Chorus
9. "When I was a Lad" _____ Sir Joseph, Chorus
10. "A British Tar" _____ Boatswain, Carpenter's Mate, Ralph, Sailor Chorus
11. Refrain Audacious Tar" _____ Ralph, Josephine
12. "Can I Survive this Overbearing?" _____ Company

Act II

13. "Fair Moon, to Thee I sing" _____ Captain Corcoran
14. "Things are seldom what they seem" _____ Captain Corcoran, Buttercup
15. "The Hours Creep on Apace" _____ Josephine
16. "Nevermind the Why and Wherefore" _____ Captain Corcoran, Josephine, Sir Joseph
17. "Kind Captain I've Important Information" _____ Captain Corcoran, Dick Deadeye
18. "Carefully on Tiptoe Stealing" _____ Captain Corcoran, Dick Deadeye, Chorus
19. "Farewell my Own" _____ Ralph, Josephine, Chorus
20. "A Many Years Ago" _____ Buttercup, Chorus
21. "Oh Joy Oh Rapture Unforseen" _____ Company

H.M.S. PINAFORE

Act I

The H.M.S Pinafore, a ship in Her Majesty's navy, is docked in the harbour at Portsmouth, its sailors proudly scrubbing the deck. Little Buttercup, a Portsmouth "bumboat woman" (dockside vendor) comes on board to sell her wares to the crew. Among the crew is the handsome sailor, Ralph Rackstraw. Ralph reveals to his messmates that he is in love with the Captain's daughter, Josephine. His messmates are sympathetic, with the exception of the villainous Dick-Deadeye, who reminds Ralph that a lady such as Josephine would never marry a lowly sailor.

Josephine is promised to the First Lord of the Admiralty, Sir Joseph Porter. She reveals to her father, Captain Corcoran, that she loves a sailor aboard his ship, but decides that she will do as he asks and marry Sir Joseph. Sir Joseph arrives on the ship, accompanied by his train of sisters, cousins and aunts, and notes that "a British sailor is any man's equal." Inspired by Sir Joseph, Ralph tells Josephine he loves her. Although Josephine secretly loves Ralph in return, she haughtily rejects him.

Depressed, Ralph threatens to kill himself. Josephine intervenes, revealing her love for Ralph. Josephine and Ralph, along with crew of the Pinafore and female relatives of Sir Joseph, make plans to elope that that very night, ignoring the warning of Dick Deadeye.

Act II

As night falls upon the Pinafore, Captain Corcoran sings to the moon of his troubles. Buttercup declares her love for the Captain, although he rejects her because of his high rank. She warns him that things are about to change, and that not all is as it seems.

Sir Joseph complains that Josephine has not yet agreed to marry him. Captain Corcoran tells him she is dazzled by his rank and wealth, and urges Sir Joseph to explain "love levels all ranks." Meanwhile, Josephine is torn in choosing between Ralph and Sir Joseph. Sir Joseph argues for equality of mankind, but only succeeds in convincing Josephine to elope with Ralph.

Dick Deadeye, finding the Captain alone, tells him that Ralph and Josephine plan to elope that very night. The Captain, enraged, hides himself on the ship while the crew tiptoe away. The Captain confronts the two lovers, so angry that he swears. Sir Joseph arrives just to hear the Captain's foul language, and orders the Captain to his cabin.

When Sir Joseph discovers that Ralph intends to wed Josephine, Sir Joseph has Ralph arrested. All looks grim for the two lovers, but Buttercup has a secret that changes everyone's lives.



Pontus